

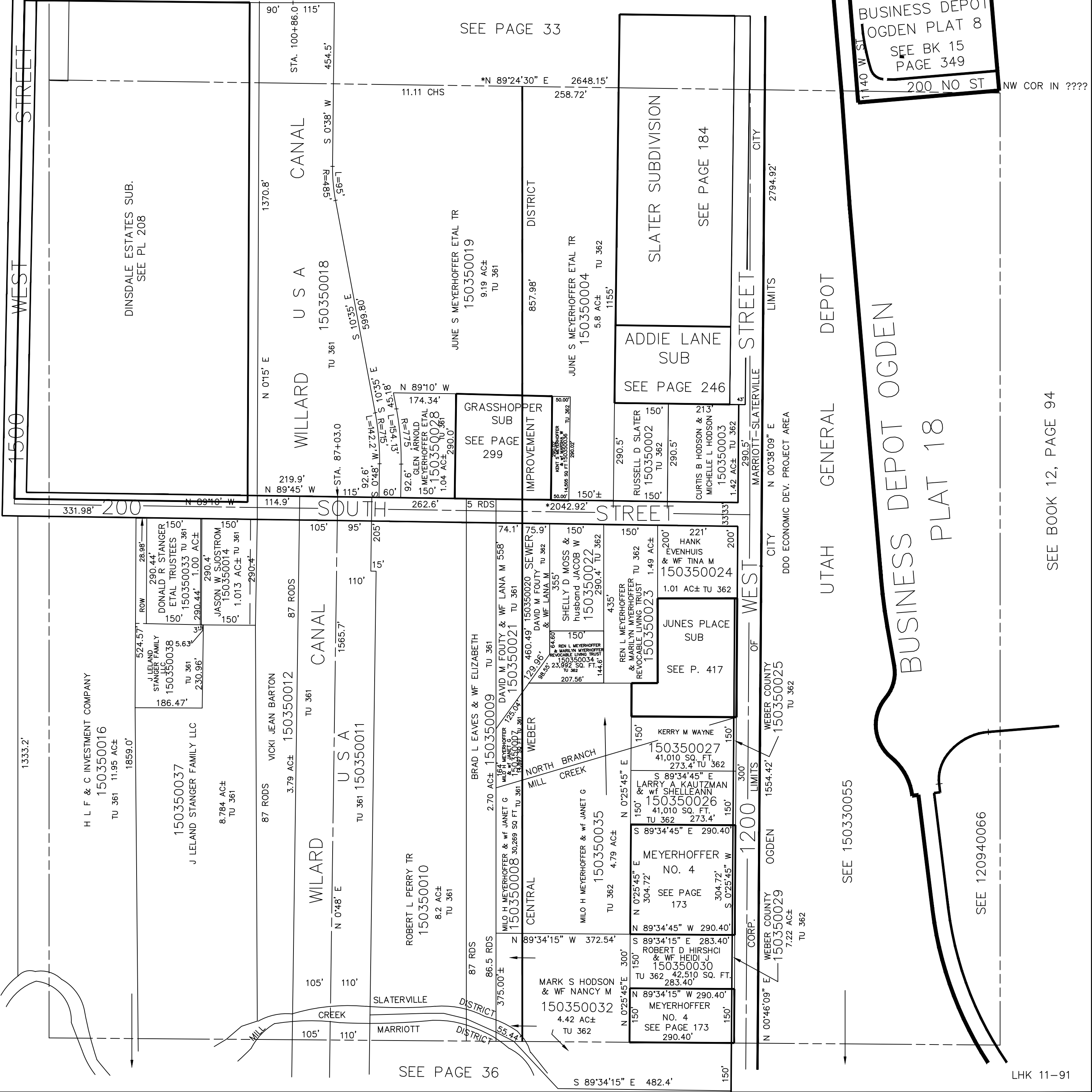
N.E. 1/4 OF
SECTION 13, T.6N., R.2W., S.L.B. & M.

IN OGDEN CITY AND MARRIOTT-SLATERVILLE CITY

TAXING UNIT: 358, 361, 362

SCALE 1" = 200'

SEE PAGE 38



SEE PAGE 33

SEE PAGE 299

SEE PAGE 246

SEE PAGE 184

BUSINESS DEPOT
OGDEN PLAT 8
SEE BK 15
PAGE 349

BUSINESS DEPOT OGDEN
PLAT 18

NW COR IN ????

SEE PAGE 36

SEE BOOK 12, PAGE 94

SEE 150330055

SEE 120940066